

H:\Midway City\City Projects\Capital Facilities Plan 2009-2021\2022 Update\Ch 4 Trails - 2022\Drawings\Figure 4-1 Trails Master Plan.dwg - CP-01 - 9/19/2022 09:20am alexandria.lewallen

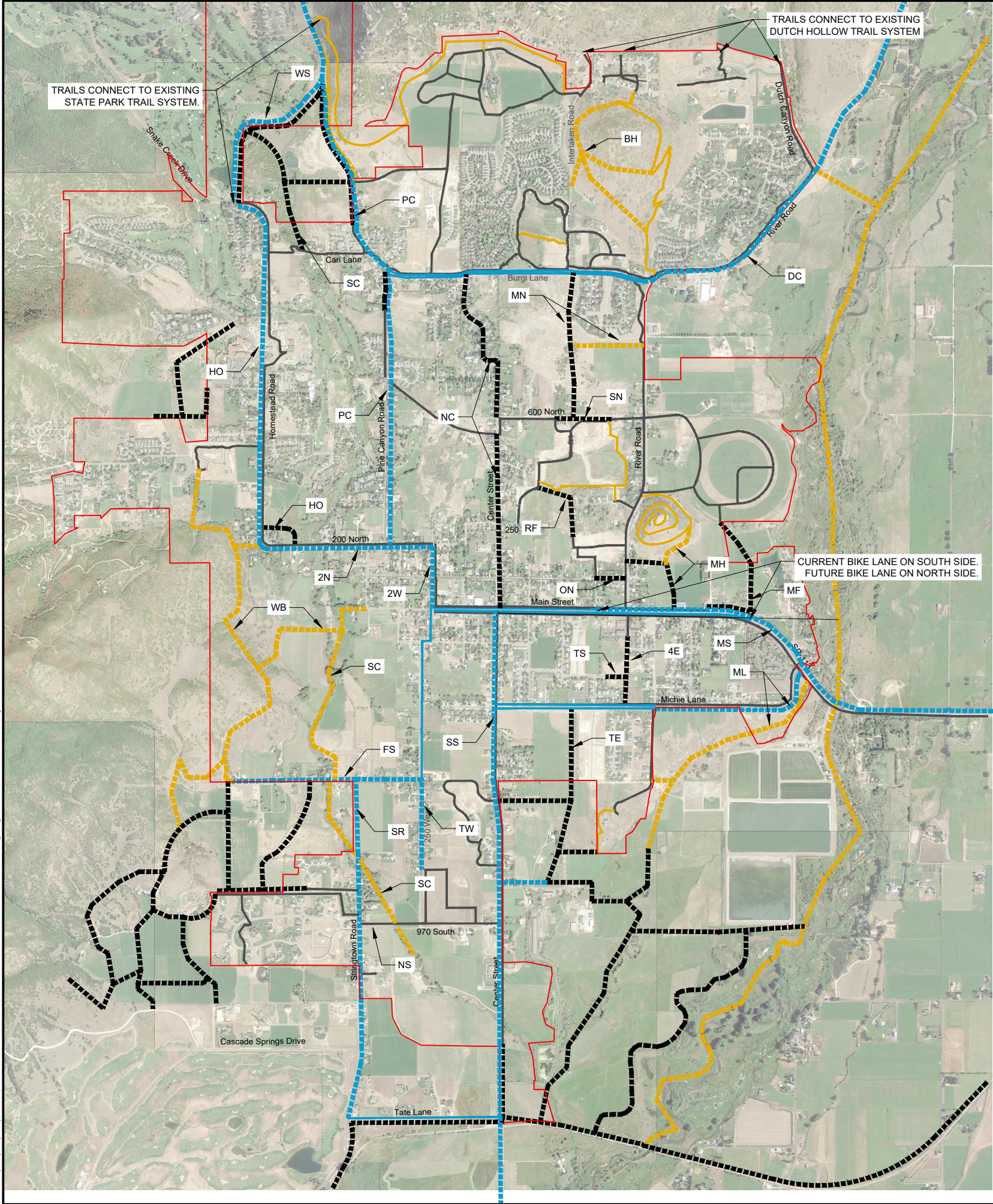


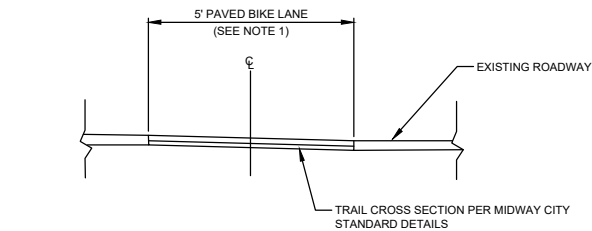
FIGURE 4-1

MIDWAY CITY

TRAIL SYSTEM
MASTER PLAN

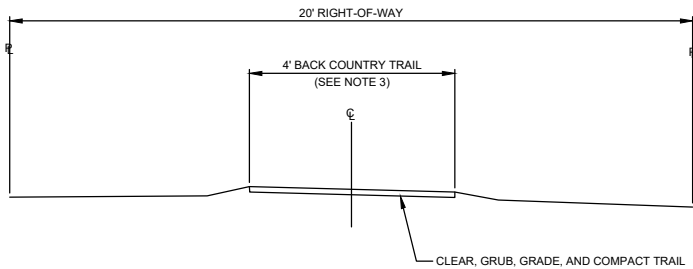
LEGEND

- CURRENT PAVED TRAILS
- FUTURE PAVED TRAILS
- CURRENT BACK COUNTRY TRAILS
- FUTURE BACK COUNTRY TRAILS
- CURRENT BIKE LANES
- FUTURE BIKE LANES
- MIDWAY CITY BOUNDARY



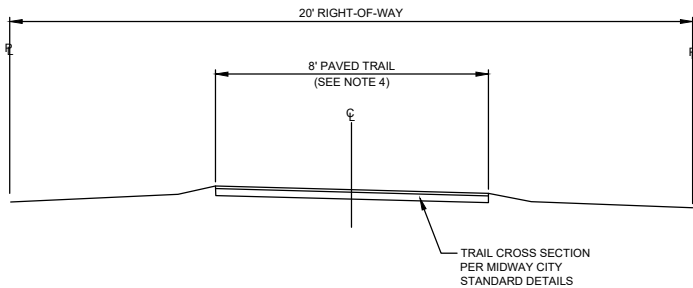
PROPOSED 5' HARD SURFACE PAVED BIKE LANE

N.T.S.



PROPOSED 4' NATURAL SURFACE BACK COUNTRY TRAIL

N.T.S.



PROPOSED 8' HARD SURFACE PAVED TRAIL

N.T.S.

ID	Trail Group
BH	Burgi Hill
DC	Dutch Canyon
FS	500 South
HO	Homestead
MF	Midway Farms
MH	Memorial Hill
ML	Michi Lane
MN	Mountain Spa
MS	Main Street
NC	North Center St.
NS	970 South
ON	100 North
PC	Pine Canyon
RF	Remund Farms
SC	Snake Creek
SS	South Center St.
SN	600 North
SR	Stringtown Road
TE	200 East
TS	200 South
TW	250 West
WB	West Bench
WS	Warm Spring Dr.
2N	200 North
2W	200 West
4E	400 East

- NOTES
1. 5' BIKE LANE WIDTHS ARE REQUIRED UNLESS APPROVED BY MIDWAY CITY.
 2. ALL FUTURE BIKE LANES SHOWN ON THIS MAP WILL BE IN BOTH DIRECTIONS UNLESS NOTED ABOVE.
 3. 4' BACK COUNTRY TRAIL WIDTHS ARE REQUIRED UNLESS APPROVED BY MIDWAY CITY.
 4. 8' PAVED TRAIL WIDTHS ARE REQUIRED UNLESS APPROVED BY MIDWAY CITY.

HORROCKS
ENGINEERS

728 WEST 100 SOUTH #2
HEBER CITY, UTAH 84032
(435) 654-2226

Midway

MIDWAY CITY
75 NORTH 100 WEST
PO BOX 277
MIDWAY, UTAH 84049
(435) 654-3223